

PALM ISLES, A P.U.D.

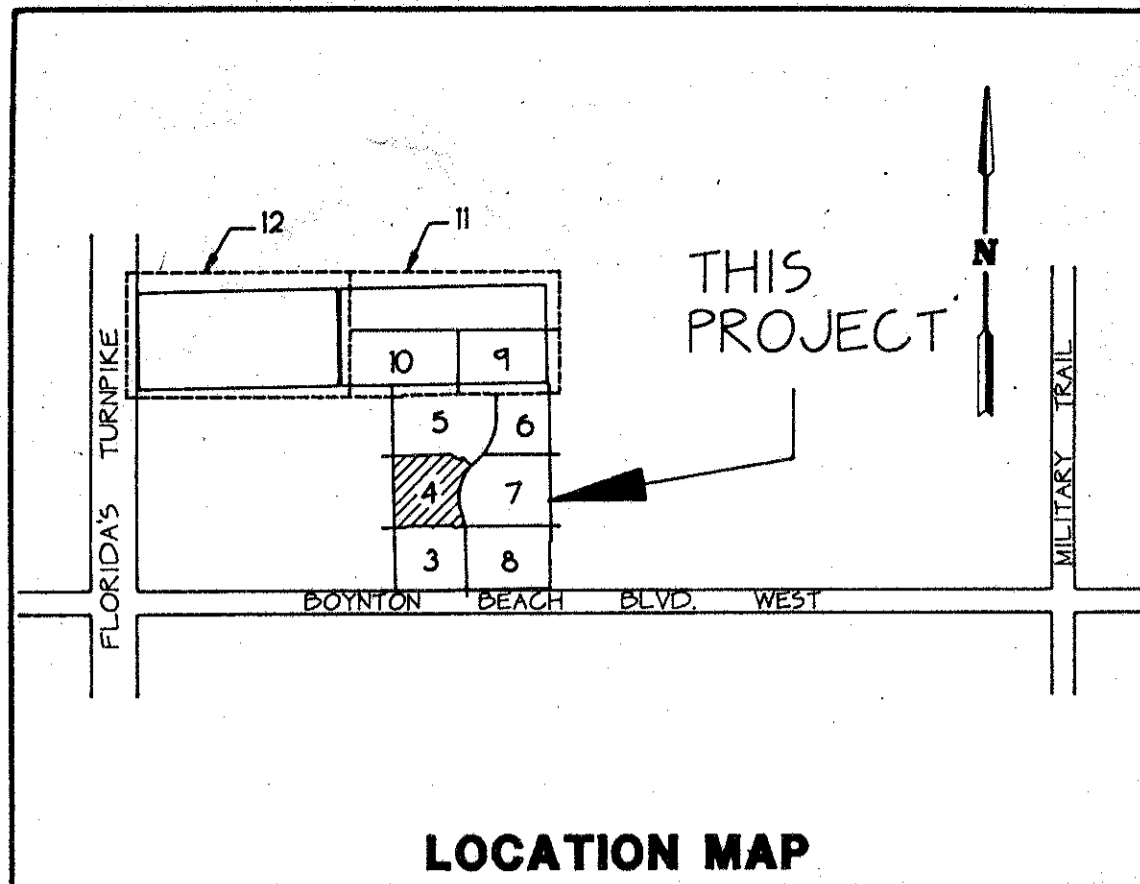
119

A REPLAT OF A PORTION OF BLOCK 49 OF PALM BEACH FARMS COMPANY PLAT NO. 3 AS RECORDED IN PLAT BOOK 2, PAGES 45 THROUGH 54 INCLUSIVE OF THE PUBLIC RECORDS OF PALM BEACH COUNTY, FLORIDA IN SECTION 21, TOWNSHIP 45 SOUTH, RANGE 42 EAST, PALM BEACH COUNTY, FLORIDA

THIS INSTRUMENT PREPARED BY JAMES E. PARK, P.L.S. WILLIAMS, HATFIELD & STONER, INC. - ENGINEERS PLANNERS SURVEYORS 1325 SOUTH CONGRESS AVENUE, SUITE 118, BOYNTON BEACH, FLORIDA 33426

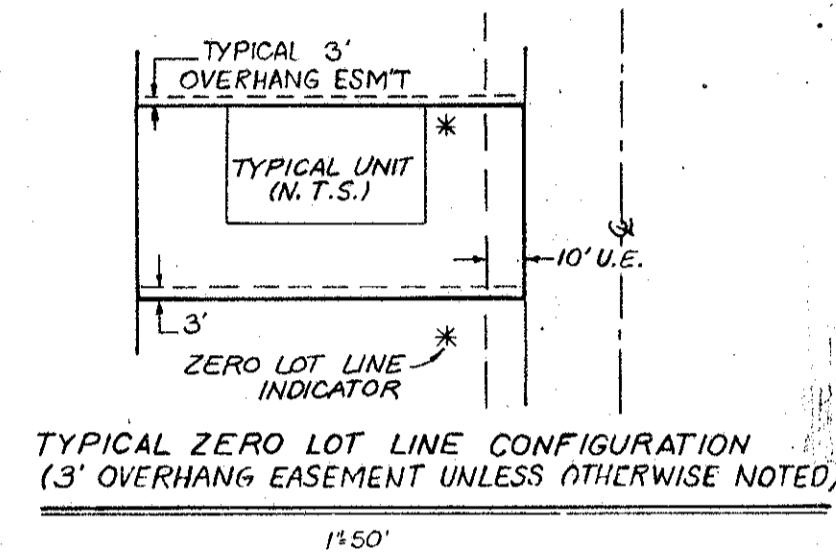
571-001

SHEET 4 OF 12

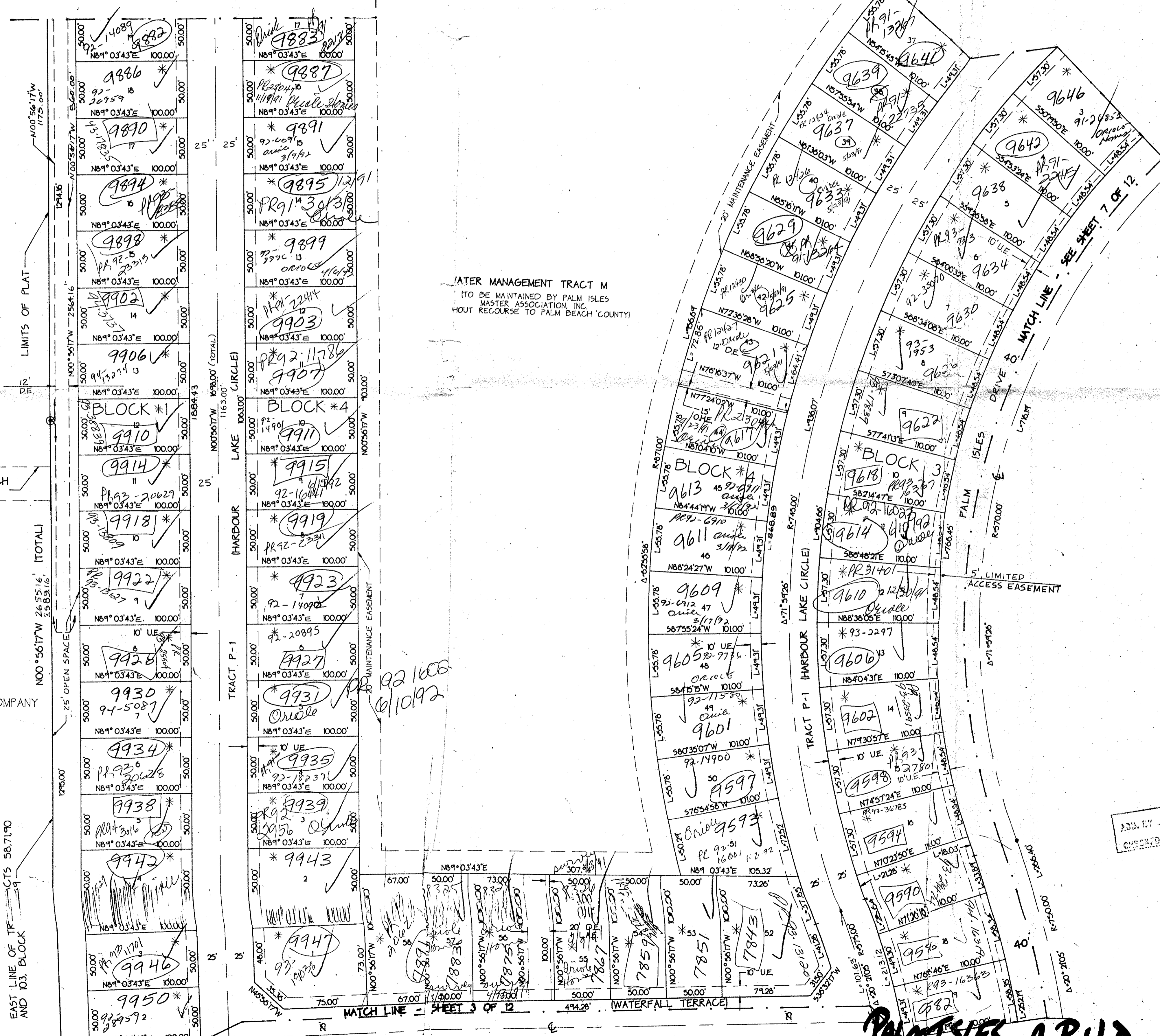


LOCATION MAP

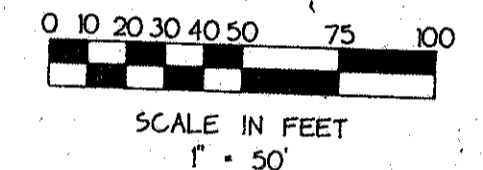
MATCH LINE - SEE SHEET 5 OF 12



TYPICAL ZERO LOT LINE CONFIGURATION (3' OVERHANG EASEMENT UNLESS OTHERWISE NOTED)



WATER MANAGEMENT TRACT M TO BE MAINTAINED BY PALM ISLES MASTER ASSOCIATION, INC. WITHOUT RECOURSE TO PALM BEACH COUNTY



NOTE: SHEETS 3 THROUGH 10 AT 1" = 50' SHEETS 11 AND 12 AT 1" = 100'

PALM ISLES
BOOK 67
PAGE 119
FLOOR MAP # 185A
ZONING K9
PLAT NO. 3
P.B.2, PG. 45-54
DATE 12/15/92
BY J.E.P./J.S.

ADD. BY BT
CHECKED BY Cuth

Plat. 87-92
Alloc. #0001
No Schools PER MEMO
0571-001

PALM ISLES, A P.U.D. 67/119